

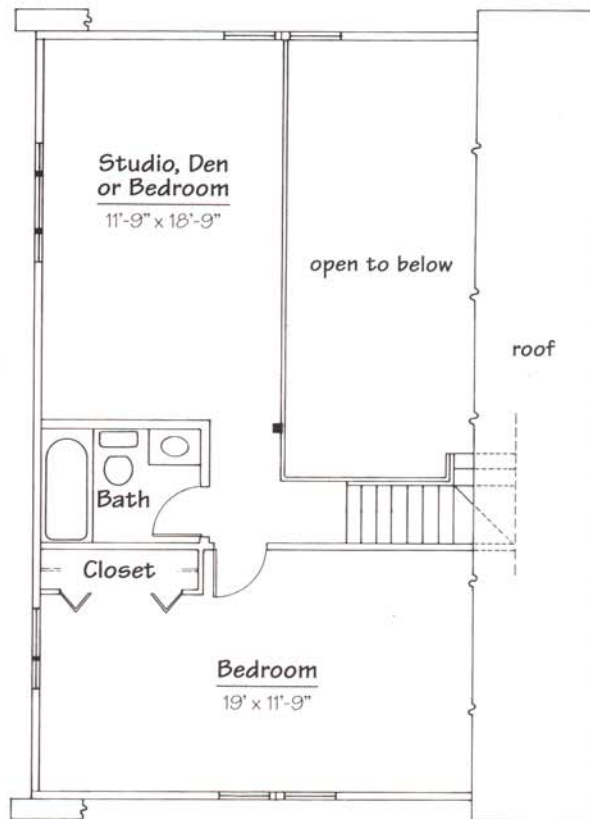
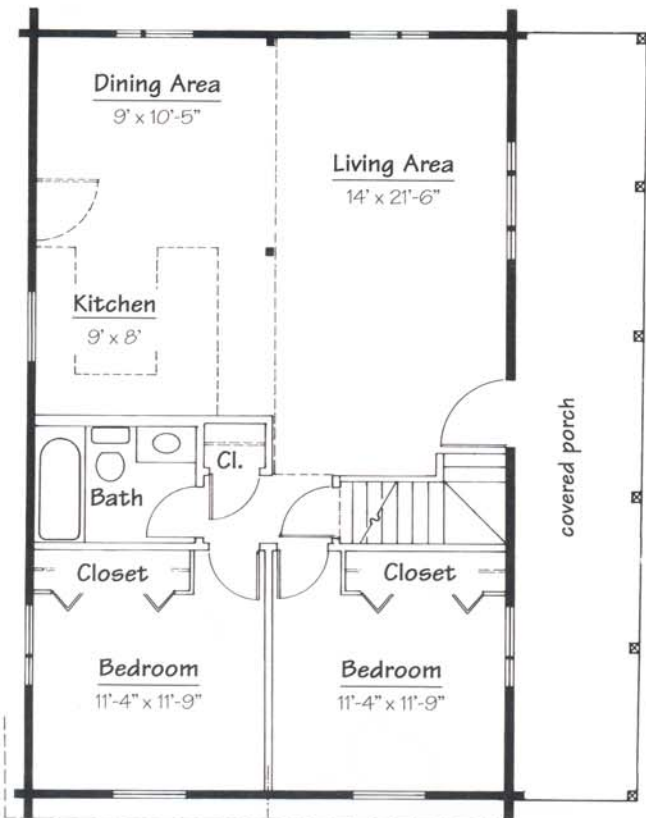
Living Area

- ▶ 38' x 24'
912 sq. ft. 1st.
656 sq. ft. loft
- ▶ 38' x 28'
1,064 sq. ft. 1st.
713 sq. ft. loft

Features

- ▶ 3 Bedrooms
- ▶ 2 Baths
- ▶ Studio/Den
- ▶ Covered Porch

38' x 24' shown



Spacious and versatile, the Putnam accommodates up to four bedrooms. A second story dormer nicely expands the living area. Optional dormer shingles provide an appealing design contrast to the traditional exterior log walls. Smart styling and cozy comfort.

The
Artistry
of Alta
Log
Homes