

Right Gable Elevation



# Warwick

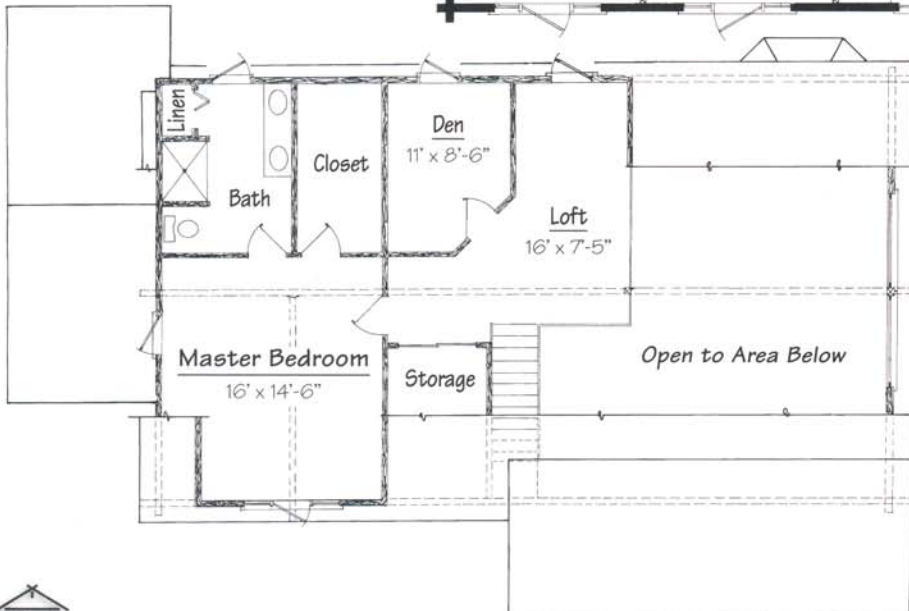


### Living Area

- 1,344 sq. ft. 1st.
- 757 sq. ft. loft
- Total sq. ft. 2,101
- 576 sq. ft. garage
- 28' x 72'

### Features

- 4 Bedrooms
- 2 Baths
- Great Room
- Covered Porch



A living room that stretches into the dining room makes this design perfect for entertaining. A fireplace, as well as a cathedral ceiling, further enhances the atmosphere.

The master suite has a vaulted A-dormer with pinnacled ceiling which lends character to this three-bedroom retreat.

The Artistry of Alta Log Homes

